

# Knife Crime and MOPAC Performance Overview

September 2018

*Sources:*

*Except where noted, all data from Metropolitan Police Service (MPS) Website and MPS AWARE System, [haringey.gov.uk](http://haringey.gov.uk) and covers the period August 2016 to July 2018*

# Performance Overview



- The Mayor's Police and Crime Plan (2017-2021) has outlined key priorities for Haringey:

## Mandatory High Harm Crimes:

- Sexual Violence
- Domestic Abuse
- Child Sexual Exploitation
- Weapon-Based Crime
- Hate Crime

## Mandatory Volume Crime:

- Anti-Social Behaviour

## Local Priorities:

- Robbery
- Non-Domestic Violence with Injury (VWI)

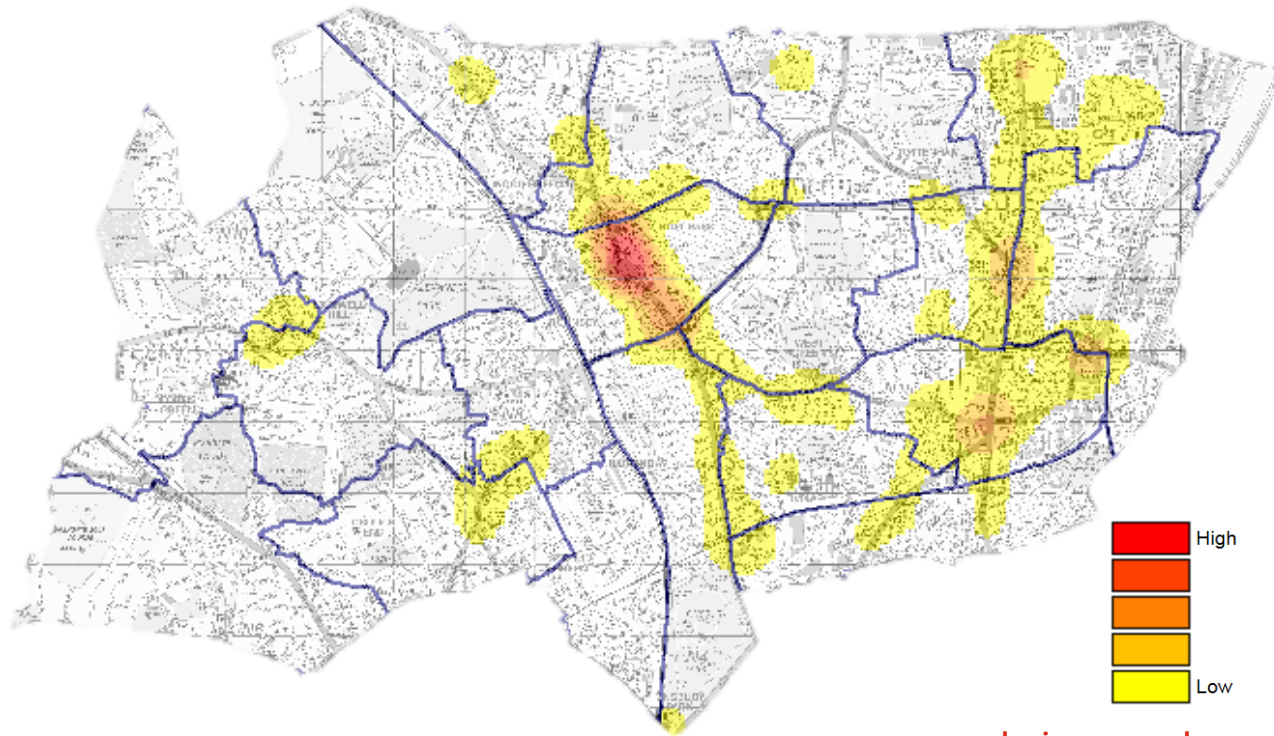
- Key focus on Violence, Vulnerability and Exploitation, whilst balancing response to volume crime
- Ranking tables show Haringey in the London context (No.1 indicates best performing borough)

# Total Notifiable Offences

Borough	TNO	London Rank	Volume
Hackney	-5.4%	1	29985
Ealing	-1.1%	2	27930
Islington	-1.1%	3	30004
Croydon	-0.1%	4	30520
Greenwich	0.7%	5	25092
Merton	1.2%	6	13652
Lambeth	1.2%	7	35342
Tower Hamlets	1.5%	8	32466
Lewisham	1.8%	9	25312
Harrow	2.1%	10	14159
Barking and Dagenham	2.4%	11	18407
Richmond upon Thames	2.4%	12	12792
Sutton	2.8%	13	11919
Kensington and Chelsea	2.9%	14	21801
Bromley	2.9%	15	22810
Hillingdon	3.0%	16	24801
Waltham Forest	3.5%	17	22907
Barnet	4.1%	18	27518
Wandsworth	4.4%	19	26169
Havering	4.4%	20	18856
Hounslow	5.1%	21	25347
Hammersmith and Fulham	5.5%	22	22097
<b>Haringey</b>	<b>5.7%</b>	<b>23</b>	<b>31114</b>
Southwark	5.9%	24	35071
Bexley	6.2%	25	15080
Newham	6.8%	26	35610
Brent	8.2%	27	30818
Kingston upon Thames	8.3%	28	11842
Westminster	8.7%	29	59027
Camden	9.0%	30	37300
Redbridge	9.6%	31	23846
Enfield	10.6%	32	26775
<b>London Total</b>	<b>3.9%</b>		<b>826369</b>

Overall recorded crime in Haringey has increased by 6% in the 12 months to July 2018, compared to a London wide average increase of 4%.

The main hotspots are located around Wood Green High Road and around the A10 corridor, from Bruce Grove to Seven Sisters.



# Hate Crime



- There has been a London wide trend of increased reports of some hate crime categories over the past year.
- Haringey has experienced an increase of 11 % in homophobic hate crime reports in the 12 months to July. London as a whole has seen an increase of 36% in this same category.
- Reductions have been recorded in the volume of hate crime reports for all other categories in Haringey.

	Haringey August 2016 – July 2017	Haringey August 2017 – July 2018	Haringey Change %	London Change %
<b>Anti-Semitic Hate Crime</b>	25	39	-2%	56%
<b>Disability Hate Crime</b>	20	27	-22%	35%
<b>Faith Hate Crime</b>	105	94	-10%	-10%
<b>Homophobic Hate Crime</b>	72	98	11%	36%
<b>Islamophobic Hate Crime</b>	62	48	-17%	-23%
<b>Racist &amp; Religious Hate Crime</b>	690	663	-6%	-4%
<b>Transgender Hate Crime</b>	7	6	-5%	-14%



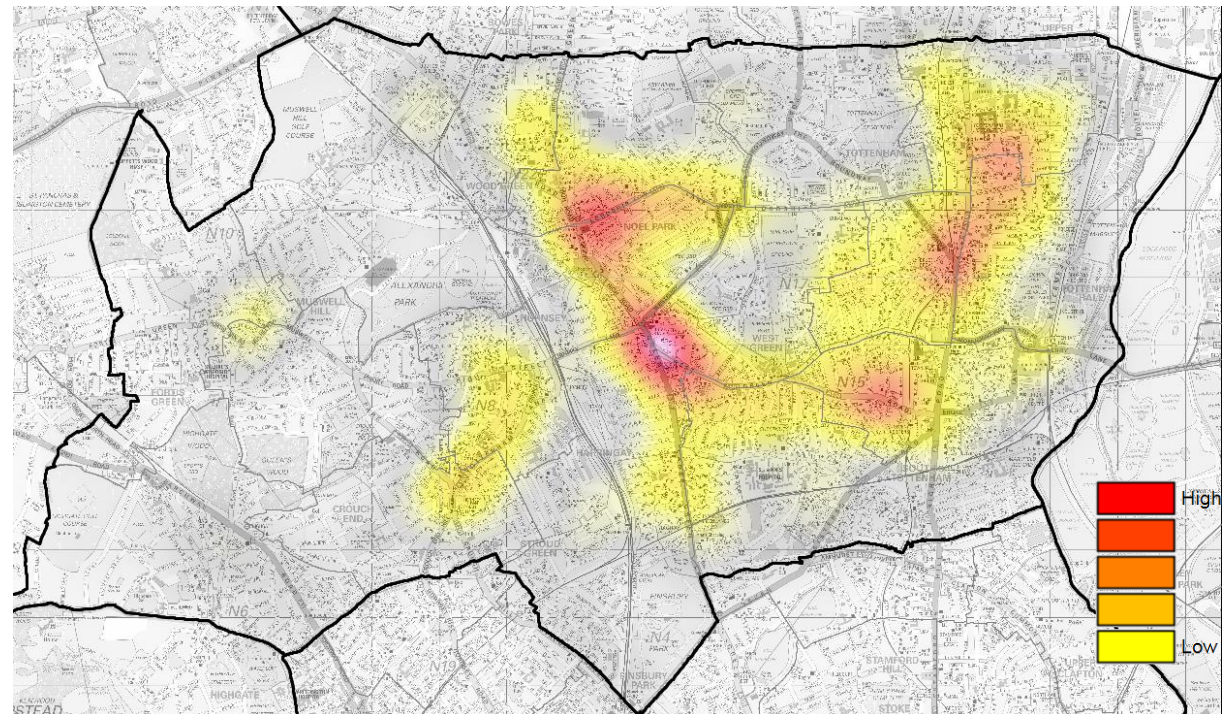
# Domestic Abuse Violence with Injury

Borough	Domestic Abuse VWI	London Rank	Volume
Lewisham	-10.3%	1	967
Tower Hamlets	-9.0%	2	810
Hackney	-8.6%	3	757
Bromley	-8.4%	4	760
Croydon	-7.9%	5	1219
Bexley	-5.6%	6	552
Hammersmith and Fulham	-4.9%	7	488
Lambeth	-4.7%	8	921
Havering	-4.1%	9	677
Waltham Forest	-4.0%	10	745
Hounslow	-4.0%	11	869
Barnet	-3.4%	12	764
Kensington and Chelsea	-2.3%	13	342
Redbridge	-2.2%	14	655
Richmond upon Thames	-1.1%	15	350
Brent	-0.4%	16	933
Kingston upon Thames	-0.3%	17	318
Harrow	-0.2%	18	508
Hillingdon	1.4%	19	770
Merton	1.5%	20	484
<b>Haringey</b>	<b>2.5%</b>	<b>21</b>	<b>993</b>
Westminster	2.8%	22	586
Ealing	4.2%	23	951
Enfield	4.4%	24	926
Greenwich	4.5%	25	1013
Barking and Dagenham	6.9%	26	821
Newham	7.1%	27	1084
Islington	8.9%	28	707
Sutton	9.6%	29	493
Southwark	12.6%	30	1109
Wandsworth	14.5%	31	757
Camden	15.0%	32	597
<b>London Total</b>	<b>0.0%</b>		<b>23926</b>

- Domestic Abuse VWI in Haringey has increased by 2.5% in the 12 months to July 2018, compared to a London wide offending pattern that has remained stable.

- Offending takes place primarily in residential locations, with hotspots in Turnpike Lane, Wood Green and Bruce Grove.

- Over two-thirds of all reported Domestic Abuse VWI occurs to the East of the borough.



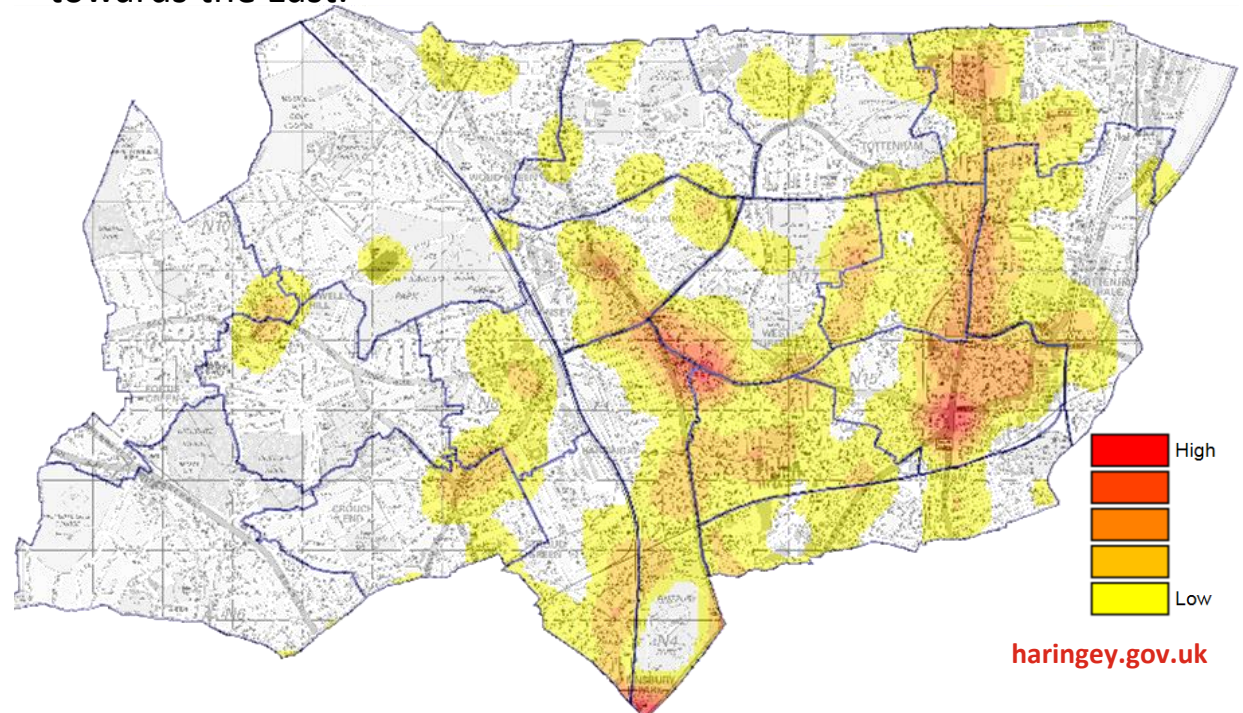
# Sexual Offences

Borough	Sexual Offences	London Rank	Volume
Richmond upon Thames	-16.3%	1	293
Hammersmith and Fulham	-7.6%	2	435
Sutton	-6.9%	3	339
Hounslow	-3.9%	4	560
Lewisham	-3.5%	5	696
Bexley	-2.7%	6	403
Harrow	-0.3%	7	341
Redbridge	1.4%	8	563
Waltham Forest	2.9%	9	567
Hillingdon	3.3%	10	561
Croydon	5.6%	11	904
Wandsworth	8.0%	12	753
Hackney	8.4%	13	814
Barking and Dagenham	8.4%	14	514
Kensington and Chelsea	8.8%	15	395
Barnet	8.9%	16	662
Lambeth	11.2%	17	981
Enfield	11.6%	18	654
Brent	12.3%	19	729
Islington	13.1%	20	674
Ealing	13.4%	21	660
Greenwich	15.0%	22	730
Merton	15.1%	23	358
Camden	15.2%	24	772
Southwark	16.4%	25	922
Kingston upon Thames	16.6%	26	338
Tower Hamlets	19.2%	27	802
Bromley	20.4%	28	590
Havering	21.1%	29	483
<b>Haringey</b>	<b>23.4%</b>	30	769
Newham	26.0%	31	956
Westminster	31.7%	32	1254
<b>London Total</b>	<b>10.5%</b>		<b>20472</b>

Overall sexual offences in Haringey have increased by 23% in the 12 months to July 18, compared to a London wide average increase of 11%.

44% of sexual offences in Haringey are categorised in the most serious category of rape, which is slightly above the London wide average of 40%.

Offences are spread across entire borough, with more clustering towards the East.





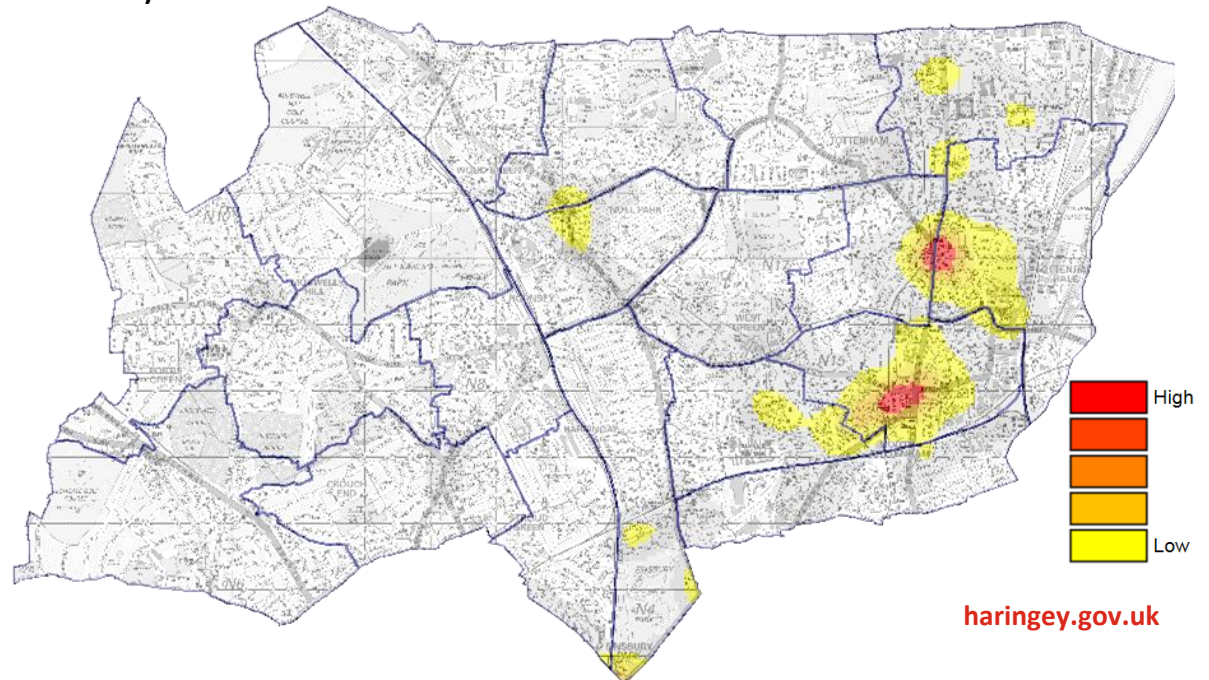
# Personal Robbery

Borough	Personal Robbery	London Rank	Volume
Harrow	-19.6%	1	267
Croydon	-16.2%	2	1027
Bromley	-3.8%	3	475
Hackney	-2.9%	4	1308
Merton	8.1%	5	333
Tower Hamlets	10.0%	6	1474
Newham	11.0%	7	1910
Lewisham	11.2%	8	956
Southwark	11.9%	9	1662
Kensington and Chelsea	12.9%	10	665
Hillingdon	13.1%	11	501
Greenwich	13.3%	12	572
Enfield	15.3%	13	1058
<b>Haringey</b>	<b>21.4%</b>	14	1797
Westminster	21.7%	15	2543
Lambeth	21.9%	16	1501
Ealing	28.7%	17	826
Barnet	29.4%	18	665
Redbridge	32.0%	19	937
Bexley	32.5%	20	281
Barking and Dagenham	34.3%	21	830
Havering	38.0%	22	574
Hounslow	38.1%	23	547
Wandsworth	40.2%	24	833
Hammersmith and Fulham	41.3%	25	667
Kingston upon Thames	41.7%	26	197
Waltham Forest	44.2%	27	936
Sutton	46.2%	28	291
Islington	51.5%	29	1788
Camden	52.9%	30	1969
Brent	73.4%	31	1458
Richmond upon Thames	95.1%	32	281
<b>London Total</b>	<b>22.6%</b>		<b>31129</b>

Personal robbery has increased significantly in Haringey, by 21%, which is over 250 extra offences per year. London wide offending has also worsened, experiencing an increase of 23%.

Robbery of mobile phones has seen an increase of 8% in Haringey (620 in 12 months), compared to a London increase in this same category of 19%.

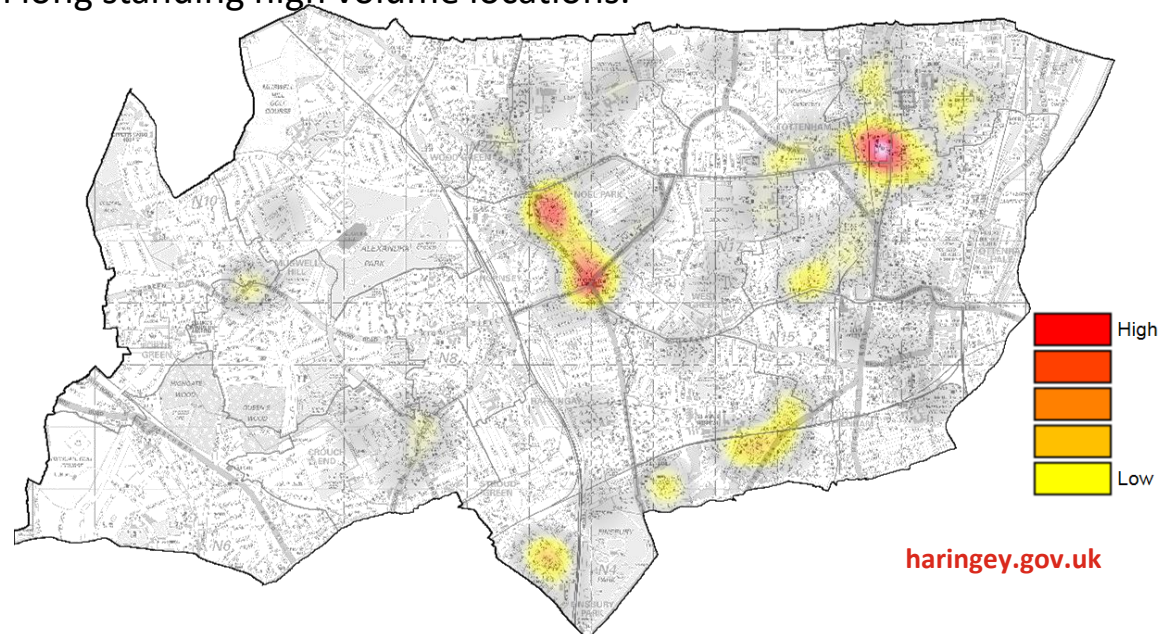
Moped enabled robbery volumes have reduced in recent months. The highest volumes have taken place in Islington, Camden and Hackney.



# Knife Injury Victims

Borough	Knife Injury Victims	London Rank	Volume
Richmond upon Thames	-29.3%	1	29
Barking and Dagenham	-22.8%	2	105
Bexley	-17.2%	3	53
Sutton	-14.3%	4	48
Redbridge	-14.2%	5	127
Southwark	-13.6%	6	267
Hounslow	-13.2%	7	118
<b>Haringey</b>	<b>-13.1%</b>	<b>8</b>	<b>192</b>
Newham	-11.3%	9	220
Merton	-10.5%	10	51
Hackney	-10.1%	11	186
Barnet	-6.0%	12	109
Bromley	-5.9%	13	96
Croydon	-5.7%	14	197
Harrow	-5.7%	15	100
Islington	-5.6%	16	168
Lewisham	-4.0%	17	192
Lambeth	-1.4%	18	273
Brent	0.4%	19	231
Enfield	5.2%	20	183
Ealing	7.6%	21	169
Westminster	8.5%	22	179
Waltham Forest	8.5%	23	166
Kingston upon Thames	12.8%	24	44
Tower Hamlets	15.5%	25	246
Wandsworth	16.4%	26	128
Kensington and Chelsea	17.1%	27	96
Havering	17.4%	28	101
Camden	17.9%	29	178
Greenwich	19.2%	30	180
Hammersmith and Fulham	21.7%	31	101
Hillingdon	25.4%	32	148
<b>London Total</b>	<b>-0.9%</b>		<b>4681</b>

- The volume of overall knife injuries has reduced by 13% in Haringey, compared to a 1% London-wide reduction.
- Haringey has experienced a reduction in young victims of knife injuries, reducing by **-23%**. During this period, London overall has increased by 1%.
- **However, serious incidents still occur, which often lead to serious and life-changing injuries.**
- Key locations are Wood Green High Street, Turnpike Lane and Bruce Grove
- Hotspots have continued to shift, following targeted partnership work in long standing high volume locations.





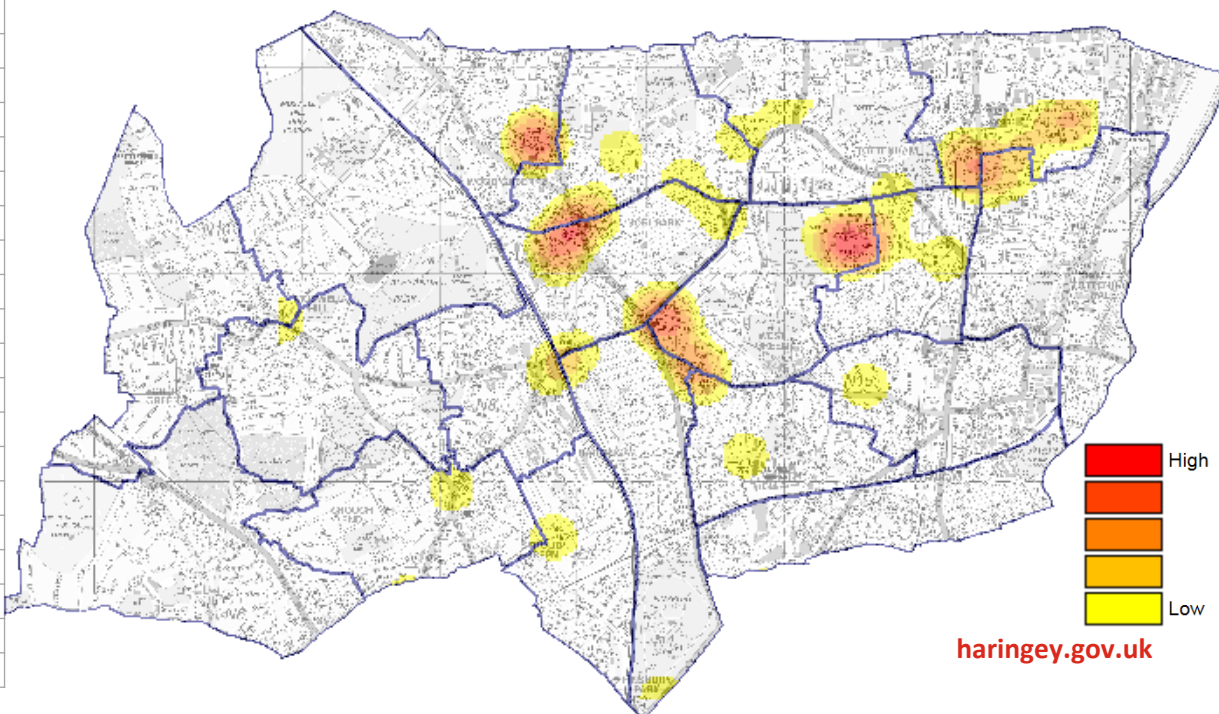
# Lethal Barrelled Firearm Discharges

Borough	Lethal Barrelled Firearm Discharges	London Rank	Volume
Hammersmith and Fulham	-71.4%	1	2
Redbridge	-66.7%	2	4
Westminster	-58.3%	3	5
Hounslow	-57.1%	4	3
Enfield	-55.0%	5	9
Barnet	-50.0%	6	2
Kingston upon Thames	-50.0%	7	1
Kensington and Chelsea	-37.5%	8	5
Havering	-37.5%	9	5
Barking and Dagenham	-33.3%	10	6
Wandsworth	-33.3%	11	4
Islington	-27.3%	12	8
Sutton	-25.0%	13	3
Camden	-10.0%	14	9
Bromley	0.0%	15	4
Greenwich	0.0%	16	10
Hackney	16.0%	17	29
Southwark	22.2%	18	22
Waltham Forest	30.0%	19	26
Newham	33.3%	20	44
Lambeth	34.5%	21	39
Brent	41.2%	22	24
Richmond upon Thames	50.0%	23	3
Harrow	60.0%	24	8
Lewisham	71.4%	25	12
Croydon	90.0%	26	19
<b>Haringey</b>	<b>95.8%</b>	<b>27</b>	<b>47</b>
Tower Hamlets	100.0%	28	14
Bexley	150.0%	29	10
Hillingdon	266.7%	30	11
Merton	500.0%	31	6
Ealing	600.0%	32	7
<b>London Total</b>	<b>17.9%</b>		<b>401</b>

■ Lethal barrelled firearm discharges in Haringey have increased significantly year on year, a 96% increase. London has increased by 18% over this same period.

■ Haringey accounts for **1 in 8** of all lethal barrelled firearm discharges in London.

■ Firearm related incidents mostly occur to the East of the borough, and show some correlation with known gang linked areas. Offences also demonstrate some geographical clustering.



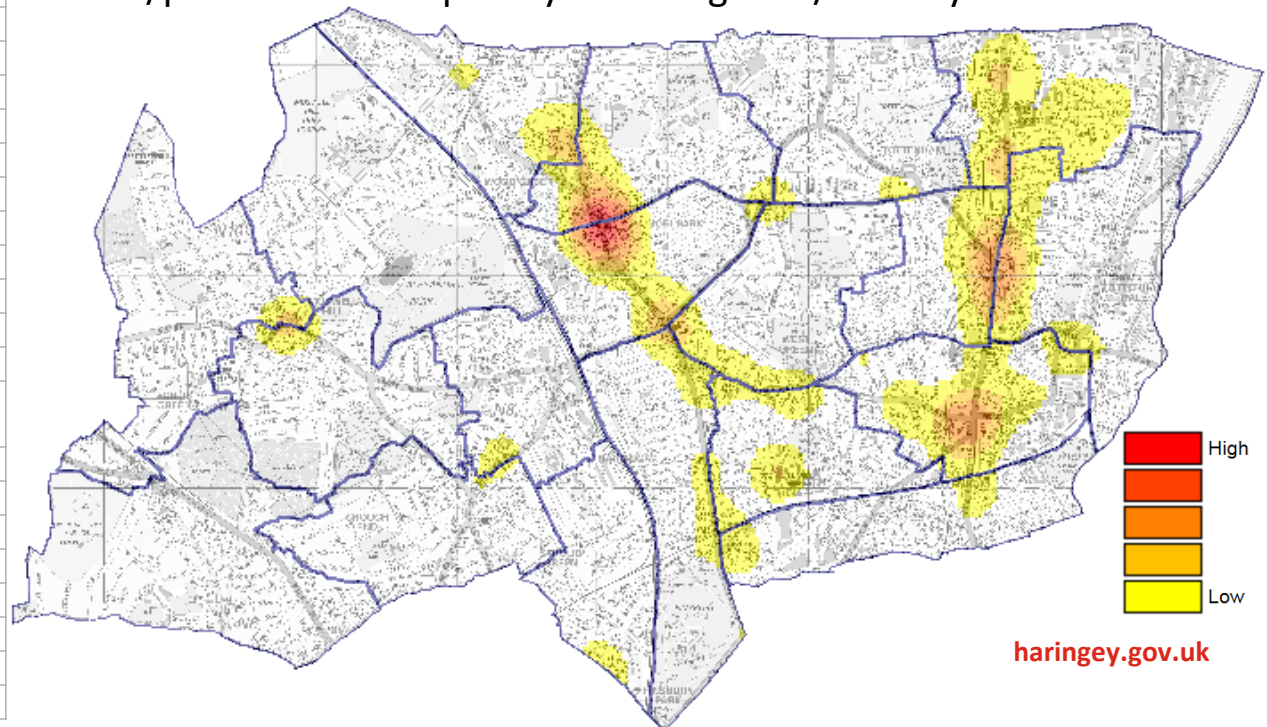
# Non-Domestic Abuse Violence With Injury

Borough	Non-Domestic Abuse VWI	London Rank	Volume
Waltham Forest	-12.3%	1	1387
Barnet	-8.0%	2	1384
Sutton	-5.8%	3	821
Bromley	-5.7%	4	1391
Lambeth	-5.1%	5	2596
Newham	-2.6%	6	2198
Greenwich	-2.3%	7	1764
Brent	-1.3%	8	2225
Lewisham	-0.6%	9	1895
Merton	-0.5%	10	880
Westminster	-0.2%	11	2915
Tower Hamlets	0.8%	12	2008
Kensington and Chelsea	0.8%	13	1041
Enfield	1.5%	14	1583
Hounslow	2.8%	15	1628
Redbridge	2.9%	16	1448
Havering	3.1%	17	1336
Hackney	3.2%	18	2097
Bexley	3.2%	19	1059
<b>Haringey</b>	<b>3.7%</b>	<b>20</b>	<b>2091</b>
Ealing	3.7%	21	2024
Kingston upon Thames	3.7%	22	837
Harrow	3.7%	23	916
Barking and Dagenham	4.9%	24	1349
Hammersmith and Fulham	5.1%	25	1309
Richmond upon Thames	5.2%	26	646
Camden	5.5%	27	2009
Croydon	5.7%	28	2285
Hillingdon	5.8%	29	1716
Southwark	6.1%	30	2321
Islington	7.6%	31	1781
Wandsworth	7.9%	32	1613
<b>London Total</b>	<b>1.1%</b>		<b>52553</b>

■ Non-domestic VWI offences have increased in Haringey by 4%, which is larger than the London-wide increase of 1%.

■ A significant proportion of incidents occur in busy locations, such as shopping centres, transport hubs and key thoroughfares.

■ Some incidents are also linked to retail/night time economy related issues, including when individuals have been refused entry to shops or bars/pubs and subsequently attacking staff/security.



# Summary

- Several areas of positive performance
  
- Current MOPAC Police and Crime Plan priorities (Robbery and Non-DA VWI) continue to be high-volume and high risk
  
- Challenges include :
  - Responding to Robbery and Weapon Enabled Crime
  
  - Continuing to tackle vulnerability, including Domestic Abuse and Youth Violence